

# Anti-H\_CD33(siglec3) hlgG4 Antibody(Gemtuzumab)

## Product information

GM-28754AB-10	10 µg
GM-28754AB-100	100 µg
GM-28754AB-1000	1 mg

## Antibody Information

Species Reactivity	Human
Clone	Gemtuzumab
Source/Isotype	Monoclonal human IgG4, κ
Application	Flow cytometry;
Other Names	CD33rSiglec, SIGLEC-3, SIGLEC3, p67
Gene ID	P20138-1 (human)
Storage	Store at 2-8°C short term (1-2 weeks).Store at ≤ -20°C long term. Avoid repeated freeze-thaw.
Formulation	Phosphate-buffered solution, pH 7.2.
Endotoxin	< 1 EU/mg, determined by LAL gel clotting assay

## Data Examples

Flow cytometry H\_CD33(SIGLEC3) CHO-K1 Cell Line (Catalog # GM-C19019) was stained with Anti-H\_CD33(siglec3) hlgG4 Antibody(Gemtuzumab) or isotype control antibody.

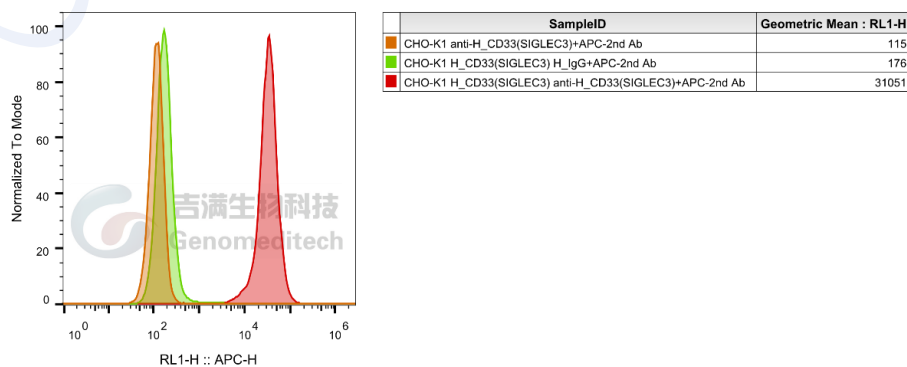


Fig. FACS

Version:0.3.2.240521